

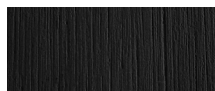
HOLLYWOOD

Hollywood_01 Teak lounge chair

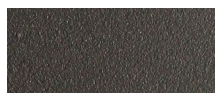
FRAME



Teak



Teak - Burnt charcoal



Asteroid Powdercoat

SEAT



Silver Batyline

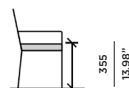
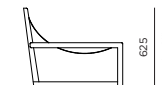
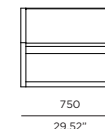


White Batyline

ACCENT



Brass



SPECIAL FEATURES



PROTECTIVE COVER



DESCRIPTION:

Harbour Outdoor has taken Hollywood and Beverly Hills by storm. The brand has proven to be one of the most popular choices for the outdoor living areas of those in the entertainment industry. The Hollywood collection is an ode to this breakthrough, and the stylistic extravagance of the 'home to the stars'.

PROTECTIVE COVERS:

Protect your investment with water-repellent Sea-Sprae® fabric; protective backside coating, UV resistant.

TECHNICAL INFORMATION

TEAK:

100% plantation grown, premium A-Grade teak.

SERGE FERRARI BATYLINE * MESH:

Light diffusing, UV and mold resistant, PVC coated

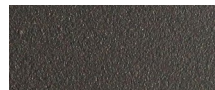
Net Weight: 20 kg / 44.1 lb

HOLLYWOOD

Hollywood_02 Metal lounge chair

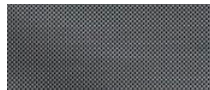


FRAME

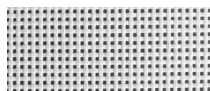


Asteroid Powdercoat

SEAT



Silver Batyline

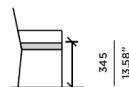
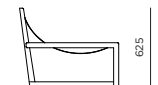
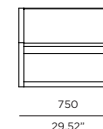


White Batyline

ACCENT



Brass



SPECIAL FEATURES



PROTECTIVE COVER



DESCRIPTION:

Harbour Outdoor has taken Hollywood and Beverly Hills by storm. The brand has proven to be one of the most popular choices for the outdoor living areas of those in the entertainment industry. The Hollywood collection is an ode to this breakthrough, and the stylistic extravagance of the 'home to the stars'.

PROTECTIVE COVERS:

Protect your investment with water-repellent Sea-Sprae® fabric; protective backside coating, UV resistant.

TECHNICAL INFORMATION

POWDER COATED ALUMINIUM:
Asko Nobel® handcrafted, powder coated, rust-proof aluminium Frame, reinforced signature connection points.

SERGE FERRARI BATYLINE® MESH:
Light diffusing, UV and mold resistant, PVC coated
Net Weight: 13 kg / 28.7 lb