

# ORA

## Ora\_08 Arm Chair

### FRAME



Teak

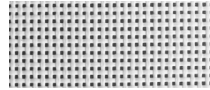


Teak - Burnt charcoal

### SEAT



Silver Batyline



White Batyline

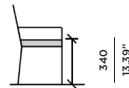
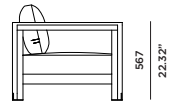
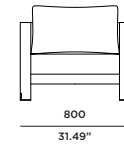
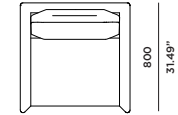


Sunbrella - Natural

### ACCENT



Brass



### SPECIAL FEATURES



### PROTECTIVE COVER



### DESCRIPTION:

A hint of brass ensures the Ora can remain a piece of understated glamour. The Ora is Harbour's quite achiever, presenting subtle design features without over-stepping the mark. Unique angled legs with Brass touches, and Indonesian A-grade teak, are presented in this full seating range.

### PROTECTIVE COVERS:

Protect your investment with water-repellent Sea-Sprae® fabric; protective backside coating, UV resistant.

### TECHNICAL INFORMATION

#### TEAK:

100% plantation grown, premium A-Grade teak.

#### SERGE FERRARI BATYLINE \* MESH:

Light diffusing, UV and mold resistant, PVC coated

#### SUNBRELLA \*:

Solution-dyed, acrylic fiber, UV, water, and mold resistant outdoor fabric.

**Net Weight:** 27kg / 59.5 lb

# ORA

## Ora\_02 2 Seater

### FRAME



Teak

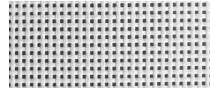


Teak - Burnt charcoal

### SEAT



Silver Batyline



White Batyline

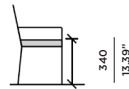
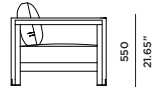
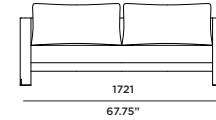
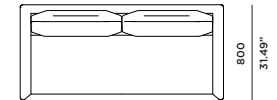


Sunbrella - Natural

### ACCENT



Brass



### SPECIAL FEATURES



### PROTECTIVE COVER



### DESCRIPTION:

A hint of brass ensures the Ora can remain a piece of understated glamour. The Ora is Harbour's quite achiever, presenting subtle design features without over-stepping the mark. Unique angled legs with Brass touches, and Indonesian A-grade teak, are presented in this full seating range.

### PROTECTIVE COVERS:

Protect your investment with water-repellent Sea-Sprae® fabric; protective backside coating, UV resistant.

### TECHNICAL INFORMATION

#### TEAK:

100% plantation grown, premium A-Grade teak.

#### SERGE FERRARI BATYLINE \* MESH:

Light diffusing, UV and mold resistant, PVC coated

#### SUNBRELLA \*:

Solution-dyed, acrylic fiber, UV, water, and mold resistant outdoor fabric.

# ORA

## Ora\_10 3 Seater

### FRAME



Teak

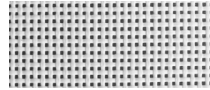


Teak - Burnt charcoal

### SEAT



Silver Batyline



White Batyline

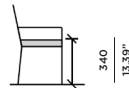
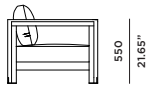
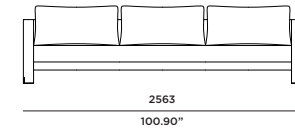
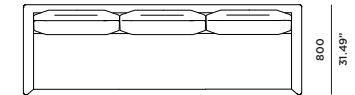


Sunbrella - Natural

### ACCENT



Brass



### SPECIAL FEATURES



### PROTECTIVE COVER

### DESCRIPTION:

A hint of brass ensures the Ora can remain a piece of understated glamour. The Ora is Harbour's quite achiever, presenting subtle design features without over-stepping the mark. Unique angled legs with Brass touches, and Indonesian A-grade teak, are presented in this full seating range.

### PROTECTIVE COVERS:

Protect your investment with water-repellent Sea-Sprae® fabric; protective backside coating, UV resistant.

### TECHNICAL INFORMATION

**TEAK:**  
100% plantation grown, premium A-Grade teak.

**SERGE FERRARI BATYLINE \* MESH:**  
Light diffusing, UV and mold resistant, PVC coated

**SUNBRELLA \*:**  
Solution-dyed, acrylic fiber, UV, water, and mold resistant outdoor fabric.

**Net Weight:** 47kg / 103.6 lb

# ORA

## Ora\_01 Dining chair

### FRAME



Teak

### SEAT



Silver Batyline

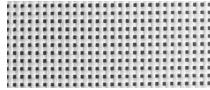
### ACCENT



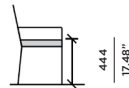
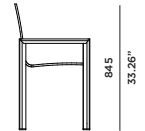
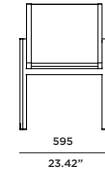
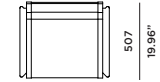
Brass



Teak - Burnt charcoal



White Batyline



### SPECIAL FEATURES



### PROTECTIVE COVER



### DESCRIPTION:

A hint of brass ensures the Ora can remain a piece of understated glamour. The Ora is Harbour's quite achiever, presenting subtle design features without over-stepping the mark. Unique angled legs with Brass touches, and Indonesian A-grade teak, are presented in this full seating range.

### PROTECTIVE COVERS:

Protect your investment with water-repellent Sea-Sprae® fabric; protective backside coating, UV resistant.

### TECHNICAL INFORMATION

#### TEAK:

100% plantation grown, premium A-Grade teak.

#### SERGE FERRARI BATYLINE \* MESH:

Light diffusing, UV and mold resistant, PVC coated

#### SUNBRELLA \*:

Solution-dyed, acrylic fiber, UV, water, and mold resistant outdoor fabric.

**Net Weight:** 8kg / 17.6 lb

# ORA

## Ora\_05 Ottoman

### FRAME



Teak

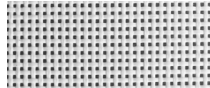


Teak - Burnt charcoal

### SEAT



Silver Batyline



White Batyline

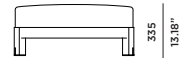
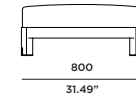


Sunbrella - Natural

### ACCENT



Brass



### SPECIAL FEATURES



#### PROTECTIVE COVER

### DESCRIPTION:

A hint of brass ensures the Ora can remain a piece of understated glamour. The Ora is Harbour's quite achiever, presenting subtle design features without over-stepping the mark. Unique angled legs with Brass touches, and Indonesian A-grade teak, are presented in this full seating range.

### PROTECTIVE COVERS:

Protect your investment with water-repellent Sea-Sprae® fabric; protective backside coating, UV resistant.

### TECHNICAL INFORMATION

#### TEAK:

100% plantation grown, premium A-Grade teak.

#### SERGE FERRARI BATYLINE \* MESH:

Light diffusing, UV and mold resistant, PVC coated

#### SUNBRELLA \*:

Solution-dyed, acrylic fiber, UV, water, and mold resistant outdoor fabric.



# ORA

## Ora\_12 Coffee table

### FRAME



Teak

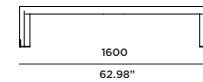
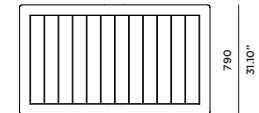


Teak - Burnt charcoal

### ACCENT



Brass



### SPECIAL FEATURES



#### PROTECTIVE COVER

### DESCRIPTION:

A hint of brass ensures the Ora can remain a piece of understated glamour. The Ora is Harbour's quite achiever, presenting subtle design features without over-stepping the mark. Unique angled legs with Brass touches, and Indonesian A-grade teak, are presented in this full seating range.

### PROTECTIVE COVERS:

Protect your investment with water-repellent Sea-Sprae® fabric; protective backside coating, UV resistant.

### TECHNICAL INFORMATION

**TEAK:**  
100% plantation grown, premium A-Grade teak.  
**Net Weight:** 39kg / 86 lb

# ORA

## Ora\_03C Extended dining table

### FRAME



Teak

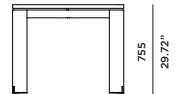
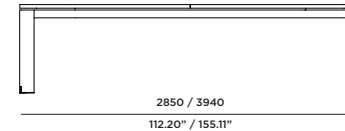
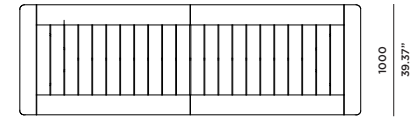


Teak - Burnt charcoal

### ACCENT



Brass



### SPECIAL FEATURES



#### PROTECTIVE COVER

### DESCRIPTION:

A hint of brass ensures the Ora can remain a piece of understated glamour. The Ora is Harbour's quite achiever, presenting subtle design features without over-stepping the mark. Unique angled legs with Brass touches, and Indonesian A-grade teak, are presented in this full seating range.

### PROTECTIVE COVERS:

Protect your investment with water-repellent Sea-Sprae® fabric; protective backside coating, UV resistant.

### TECHNICAL INFORMATION

**TEAK:**  
100% plantation grown, premium A-Grade teak.  
**Net Weight:** 110kg / 242.50 lb



# ORA

## Ora\_05A Sun lounger

### FRAME



Teak

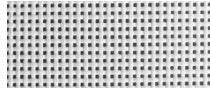


Teak - Burnt charcoal

### SEAT



Silver Batyline

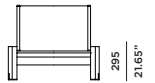
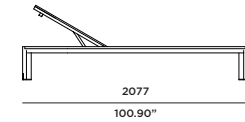
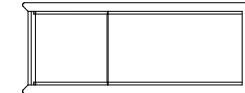


White Batyline

### ACCENT



Brass



### SPECIAL FEATURES



#### PROTECTIVE COVER

### DESCRIPTION:

A hint of brass ensures the Ora can remain a piece of understated glamour. The Ora is Harbour's quite achiever, presenting subtle design features without over-stepping the mark. Unique angled legs with Brass touches, and Indonesian A-grade teak, are presented in this full seating range.

### PROTECTIVE COVERS:

Protect your investment with water-repellent Sea-Sprae® fabric; protective backside coating, UV resistant.

### TECHNICAL INFORMATION

#### TEAK:

100% plantation grown, premium A-Grade teak.

#### SERGE FERRARI BATYLINE \* MESH:

Light diffusing, UV and mold resistant, PVC coated

**Net Weight:** 30kg / 66.10 lb