

# BYRON

## Byron\_03 Arm Chair

### FRAME



Teak

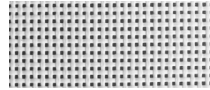


Teak - Burnt charcoal

### SEAT



Silver Batyline

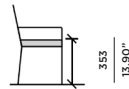
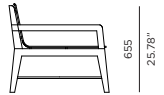
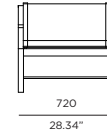
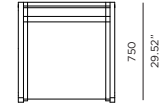


White Batyline

### ACCENT



Brass



### SPECIAL FEATURES



#### PROTECTIVE COVER

### DESCRIPTION:

As the easternmost point in Australia, Byron Bay is one of Australia's most famous tourist destinations, with a style all its own. An exciting new feature range from Harbour Outdoor, Byron continues a new Harbour trend of using brass features with organic frames. Ferrari batyline mesh is paired with Indonesian teak, and a structural brass runner for support and style.

### PROTECTIVE COVERS:

Protect your investment with water-repellent Sea-Sprae® fabric; protective backside coating, UV resistant.

### SHIPPING AND DELIVERY:

Stock frames and stock cushions delivered in 1-3 weeks.  
Stock frames with COM cushions delivered in 3-6 weeks.  
Custom Orders delivered in 10-14 weeks.

### WARRANTY:

FRAMES: 5 limited warranty on structural integrity.  
MATERIALS: 2 year limited warranty.

### TECHNICAL INFORMATION

#### TEAK:

100% plantation grown, premium A-Grade teak.

#### SERGE FERRARI BATYLINE \* MESH:

Light diffusing, UV and mold resistant, PVC coated

**Net Weight:** 14 kg / 30.9 lb