

ORA

Ora_05A Sun lounger

FRAME



Teak

SEAT



Silver Batyline

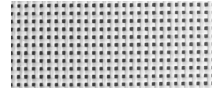
ACCENT



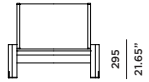
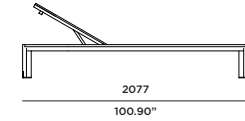
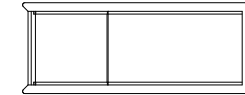
Brass



Teak - Burnt charcoal



White Batyline



SPECIAL FEATURES



PROTECTIVE COVER

DESCRIPTION:

A hint of brass ensures the Ora can remain a piece of understated glamour. The Ora is Harbour's quite achiever, presenting subtle design features without over-stepping the mark. Unique angled legs with Brass touches, and Indonesian A-grade teak, are presented in this full seating range.

PROTECTIVE COVERS:

Protect your investment with water-repellent Sea-Sprae® fabric; protective backside coating, UV resistant.

TECHNICAL INFORMATION

TEAK:
100% plantation grown, premium A-Grade teak.
SERGE FERRARI BATYLINE * MESH:
Light diffusing, UV and mold resistant, PVC coated
Net Weight: 30kg / 66.10 lb